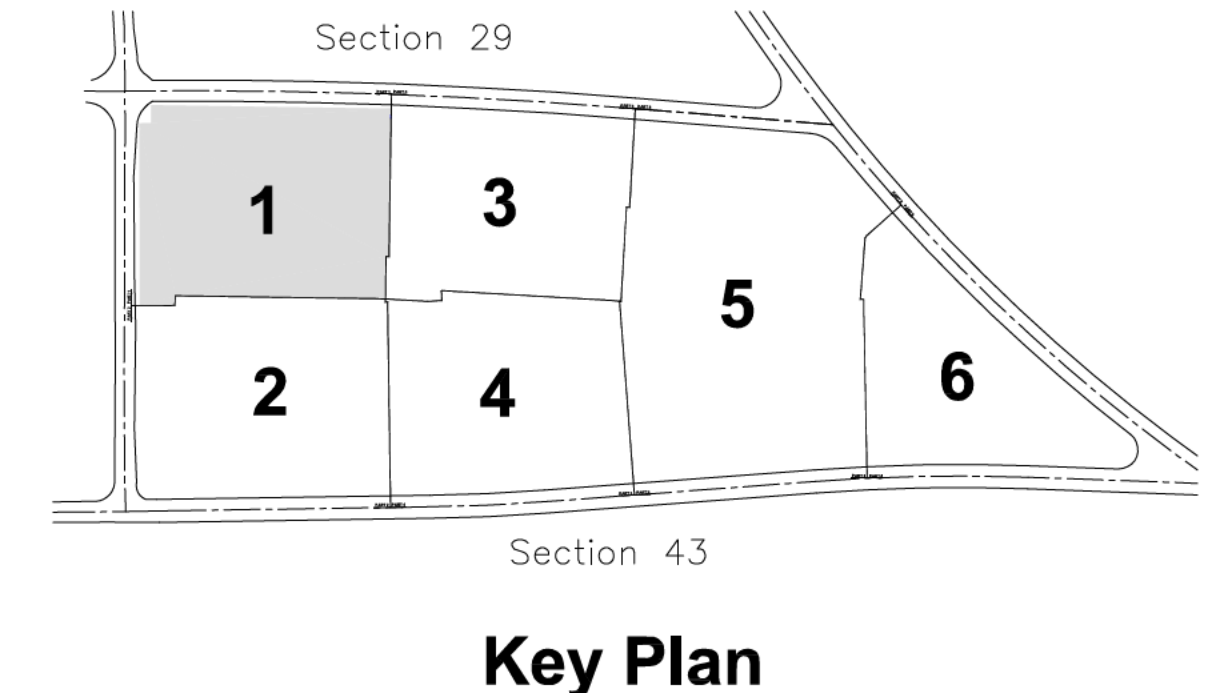


PART 1 PART 3

PART 2 PART 1

FEATURE



Key Plan

**SECTION NOTES**

- 1 THE LOT NUMBER IS PLACED IN THE UPPER RIGHT HAND CORNER OF THE LOT AS YOU FACE THE LOT AND IS INDICATED AS A SLASH OR TICK MARK.
- 2 THE LOCATION OF GRAVE MARKERS ARE SHOWN BELOW WITH ARROW INDICATING DIRECTION GRAVE MARKERS WILL FACE.
- 3 ALL LOTS ARE 2-GRAVE LOTS UNLESS OTHERWISE NOTED ON THE DRAWING.
- 4 ALL 2-GRAVE LOTS ARE 6'-4" X 10.0'  
ALL 3-GRAVE LOTS ARE 9'-6" X 10.0'

**LEGEND**

- PREMIUM FEATURE LOT
- FEATURE LOT
- TREE/LANDSCAPE LOCATIONS
- 3 GRAVE LOT
- FLUSH MARKERS ONLY
- 28"-36" MONUMENTS
- 28"-42" MONUMENTS
- 28"-60" MONUMENTS
- 28"-72" MONUMENTS
- PILLOW MARKERS

**MONUMENT NOTES**

- 1 MONUMENT LOTS ARE RESTRICTED TO THOSE AS SHOWN ON SECTION MAP.
- 2 ALL MONUMENT LOTS ARE EITHER 2-GRAVE OR 3-GRAVE LOTS OTHER CONFIGURATIONS WILL BE DETERMINED AS REQUESTED.
- 3 HEIGHT OF MONUMENTS ON DESIGNATED MONUMENT LOTS CAN VARY DEPENDING ON NUMBER OF GRAVES ASSOCIATED WITH MONUMENT REQUESTED.
- 4 ALL FOUNDATIONS ARE LOCATED WITHIN LOTS.

**LOT SUMMARY**

664	2-GRAVE LOTS
24	3-GRAVE LOTS
7	2-GRAVE PREMIUM FEATURE LOTS
21	2-GRAVE FEATURE LOTS
716	TOTAL LOTS
1456	TOTAL GRAVES

No. DATE REVISION

OFFICE OF DEVELOPMENT  
Catholic Cemeteries Association  
10000 Miles Ave., Cleveland, Ohio  
44105  
216.641.7575  
FAX: 216.641.0212

Holy Cross Cemetery - Brookpark, Ohio  
Section 42  
PART 1

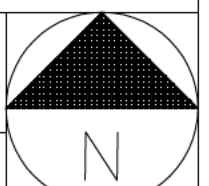
SHEET NAME:

DATE: 5.18.2006

PROJECT No.:

**A1 SECTION 42 - PART 1**

1"=20'



**PART 2 PART 1**

28	128	228	3901	3902	3903	3904	3905	3906	3907	3908	3909	3910	3911	3912	3913	3914	3915	3916	3917	3918	3919	3920	3921	3922	3923	3924	3925	3926	3927	3928	3929	3930	3931	3932	3933	3934	3935	3936	3937	3938	
29	129	229	3700	3701	3702	3703	3704	3705	3706	3707	3708	3709	3710	3711	3712	3713	3714	3715	3716	3717	3718	3719	3720	3721	3722	3723	3724	3725	3726	3727	3728	3729	3730	3731	3732	3733	3734	3735	3736	3737	3738
30	130	230	3500	3501	3502	3503	3504	3505	3506	3507	3508	3509	3510	3511	3512	3513	3514	3515	3516	3517	3518	3519	3520	3521	3522	3523	3524	3525	3526	3527	3528	3529	3530	3531	3532	3533	3534	3535	3536	3537	3538
31	131	231	3300	3301	3302	3303	3304	3305	3306	3307	3308	3309	3310	3311	3312	3313	3314	3315	3316	3317	3318	3319	3320	3321	3322	3323	3324	3325	3326	3327	3328	3329	3330	3331	3332	3333	3334	3335	3336	3337	3338
32	132	232	3100	3101	3102	3103	3104	3105	3106	3107	3108	3109	3110	3111	3112	3113	3114	3115	3116	3117	3118	3119	3120	3121	3122	3123	3124	3125	3126	3127	3128	3129	3130	3131	3132	3133	3134	3135	3136	3137	3138
33	133	233	2900	2901	2902	2903	2904	2905	2906	2907	2908	2909	2910	2911	2912	2913	2914	2915	2916	2917	2918	2919	2920	2921	2922	2923	2924	2925	2926	2927	2928	2929	2930	2931	2932	2933	2934	2935	2936	2937	2938
34	134	234	2700	2701	2702	2703	2704	2705	2706	2707	2708	2709	2710	2711	2712	2713	2714	2715	2716	2717	2718	2719	2720	2721	2722	2723	2724	2725	2726	2727	2728	2729	2730	2731	2732	2733	2734	2735	2736	2737	2738
35	135	235	2500	2501	2502	2503	2504	2505	2506	2507	2508	2509	2510	2511	2512	2513	2514	2515	2516	2517	2518	2519	2520	2521	2522	2523	2524	2525	2526	2527	2528	2529	2530	2531	2532	2533	2534	2535	2536	2537	2538
36	136	236	2300	2301	2302	2303	2304	2305	2306	2307	2308	2309	2310	2311	2312	2313	2314	2315	2316	2317	2318	2319	2320	2321	2322	2323	2324	2325	2326	2327	2328	2329	2330	2331	2332	2333	2334	2335	2336	2337	2338
37	137	237	2100	2101	2102	2103	2104	2105	2106	2107	2108	2109	2110	2111	2112	2113	2114	2115	2116	2117	2118	2119	2120	2121	2122	2123	2124	2125	2126	2127	2128	2129	2130	2131	2132	2133	2134	2135	2136	2137	2138
38	138	238	1900	1901	1902	1903	1904	1905	1906	1907	1908	1909	1910	1911	1912	1913	1914	1915	1916	1917	1918	1919	1920	1921	1922	1923	1924	1925	1926	1927	1928	1929	1930	1931	1932	1933	1934	1935	1936	1937	1938
39	139	239	1700	1701	1702	1703	1704	1705	1706	1707	1708	1709	1710	1711	1712	1713	1714	1715	1716	1717	1718	1719	1720	1721	1722	1723	1724	1725	1726	1727	1728	1729	1730	1731	1732	1733	1734	1735	1736	1737	1738
40	140	240	1500	1501	1502	1503	1504	1505	1506	1507	1508	1509	1510	1511	1512	1513	1514	1515	1516	1517	1518	1519	1520	1521	1522	1523	1524	1525	1526	1527	1528	1529	1530	1531	1532	1533	1534	1535	1536	1537	1538
41	141	241	1300	1301	1302	1303	1304	1305	1306	1307	1308	1309	1310	1311	1312	1313	1314	1315	1316	1317	1318	1319	1320	1321	1322	1323	1324	1325	1326	1327	1328	1329	1330	1331	1332	1333	1334	1335	1336	1337	1338
42	142	242	1100	1101	1102	1103	1104	1105	1106	1107	1108	1109	1110	1111	1112	1113	1114	1115	1116	1117	1118	1119	1120	1121	1122	1123	1124	1125	1126	1127	1128	1129	1130	1131	1132	1133	1134	1135	1136	1137	1138
43	143	243	900	901	902	903	904	905	906	907	908	909	910	911	912	913	914	915	916	917	918	919	920	921	922	923	924	925	926	927	928	929	930	931	932	933	934	935	936	937	938
44	144	244	700	701	702	703	704	705	706	707	708	709	710	711	712	713	714	715	716	717	718	719	720	721	722	723	724	725	726	727	728	729	730	731	732	733	734	735	736	737	738
45	145	245	500	501	502	503	504	505	506	507	508	509	510	511	512	513	514	515	516	517	518	519	520	521	522	523	524	525	526	527	528	529	530	531	532	533	534	535	536	537	538
46	146	246	498	499	488	488																																			
47	147	247																																							
48	148	248																																							
49	149	249																																							
50	150	250																																							
51	151	251																																							
52	152	252																																							
53	153	253																																							
54	154	254																																							
55	155	255																																							
56	156	256																																							
57	157	257																																							
58	158	258																																							
59	159																																								
60	160																																								

**FEATURE**

**PART 2 PART 4**

**SECTION NOTES**

- THE LOT NUMBER IS PLACED IN THE UPPER RIGHT HAND CORNER OF THE LOT AS YOU FACE THE LOT AND IS INDICATED AS A SLASH OR TICK MARK.
- THE LOCATION OF GRAVE MARKERS ARE SHOWN BELOW WITH ARROW INDICATING DIRECTION GRAVE MARKERS WILL FACE.
 

↓
- ALL LOTS ARE 2-GRAVE LOTS UNLESS OTHERWISE NOTED ON THE DRAWING.
- ALL 2-GRAVE LOTS ARE 6'-4" X 10.0'  
ALL 3-GRAVE LOTS ARE 9'-6" X 10.0'

**LEGEND**

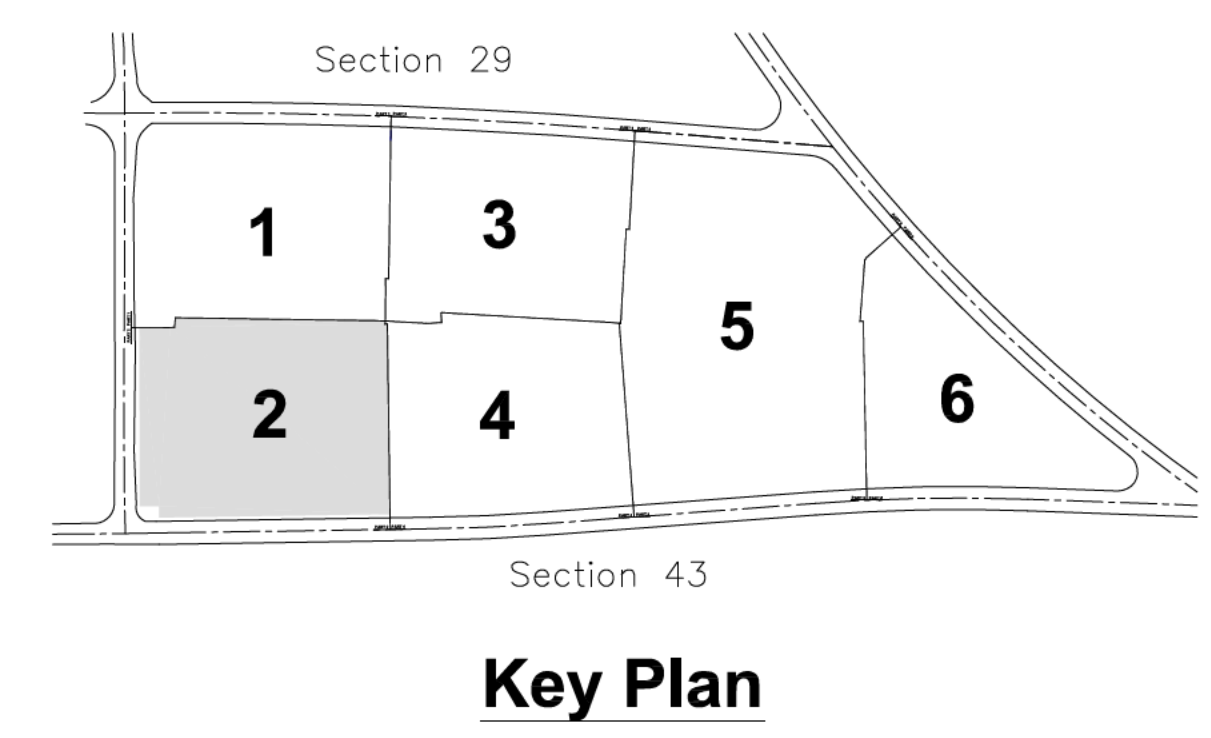
- PREMIUM FEATURE LOT
- FEATURE LOT
- TREE/LANDSCAPE LOCATIONS
- 3 GRAVE LOT
- FLUSH MARKERS ONLY
- 28"-36" MONUMENTS
- 28"-42" MONUMENTS
- 28"-60" MONUMENTS
- 28"-72" MONUMENTS
- PILLOW MARKERS

**MONUMENT NOTES**

- MONUMENT LOTS ARE RESTRICTED TO THOSE AS SHOWN ON SECTION MAP.
- ALL MONUMENT LOTS ARE EITHER 2-GRAVE OR 3-GRAVE LOTS OTHER CONFIGURATIONS WILL BE DETERMINED AS REQUESTED.
- HEIGHT OF MONUMENTS ON DESIGNATED MONUMENT LOTS CAN VARY DEPENDING ON NUMBER OF GRAVES ASSOCIATED WITH MONUMENT REQUESTED.
- ALL FOUNDATIONS ARE LOCATED WITHIN LOTS.

**LOT SUMMARY**

691	2-GRAVE LOTS
0	3-GRAVE LOTS
7	2-GRAVE PREMIUM FEATURE LOTS
22	2-GRAVE FEATURE LOTS
720	TOTAL LOTS
1440	TOTAL GRAVES



No.	DATE	REVISION

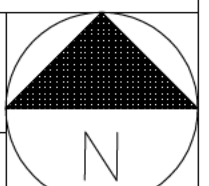
**OFFICE OF DEVELOPMENT**  
 Catholic Cemeteries Association  
 10000 Miles Ave., Cleveland, Ohio  
 44105  
 216.641.7575  
 FAX: 216.641.0212

**Holy Cross Cemetery - Brookpark, Ohio**  
**Section 42**  
**PART 2**

SHEET NAME:

DATE: 5.18.2006

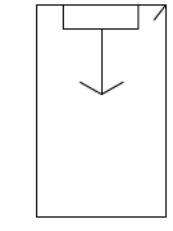
PROJECT No.:





**SECTION NOTES**

- THE LOT NUMBER IS PLACED IN THE UPPER RIGHT HAND CORNER OF THE LOT AS YOU FACE THE LOT AND IS INDICATED AS A SLASH OR TICK MARK.
- THE LOCATION OF GRAVE MARKERS ARE SHOWN BELOW WITH ARROW INDICATING DIRECTION GRAVE MARKERS WILL FACE.



- ALL LOTS ARE 2-GRAVE LOTS UNLESS OTHERWISE NOTED ON THE DRAWING.
- ALL 2-GRAVE LOTS ARE 6'-4" X 10.0'  
ALL 3-GRAVE LOTS ARE 9'-6" X 10.0'

**LEGEND**

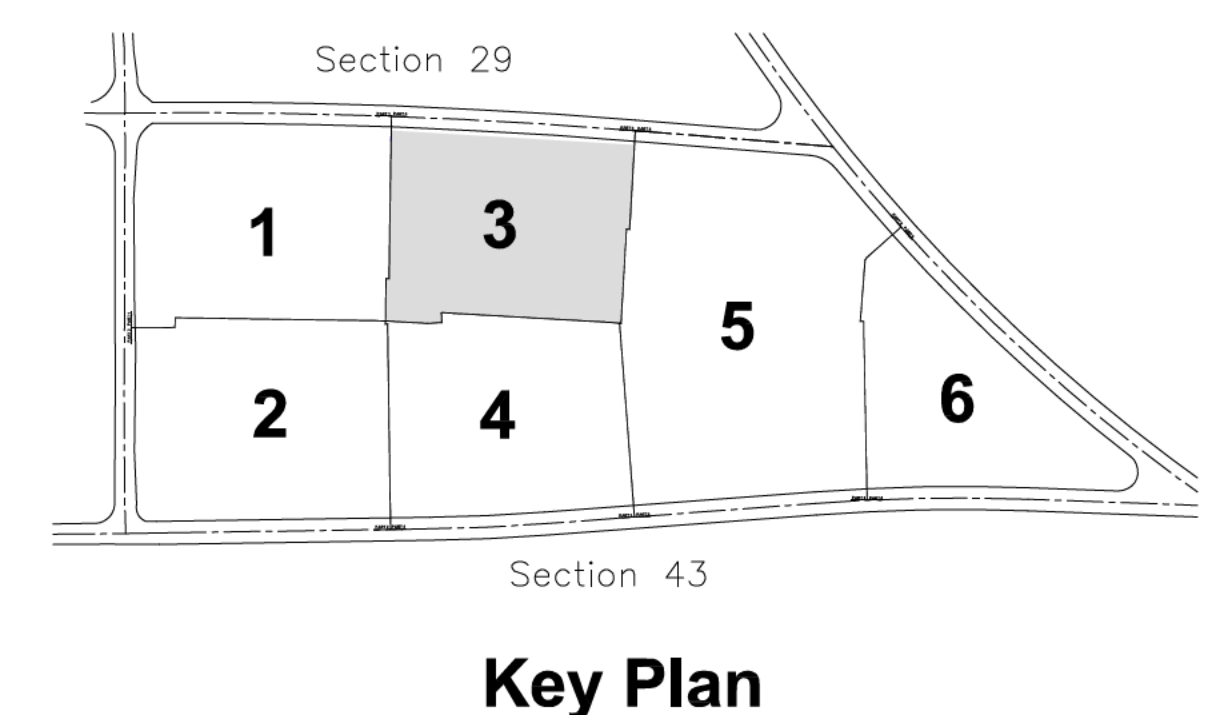
- PREMIUM FEATURE LOT
- FEATURE LOT
- TREE/LANDSCAPE LOCATIONS
- 3 GRAVE LOT
- FLUSH MARKERS ONLY
- 28"-36" MONUMENTS
- 28"-42" MONUMENTS
- 28"-60" MONUMENTS
- 28"-72" MONUMENTS
- PILLOW MARKERS

**MONUMENT NOTES**

- MONUMENT LOTS ARE RESTRICTED TO THOSE AS SHOWN ON SECTION MAP.
- ALL MONUMENT LOTS ARE EITHER 2-GRAVE OR 3-GRAVE LOTS OTHER CONFIGURATIONS WILL BE DETERMINED AS REQUESTED.
- HEIGHT OF MONUMENTS ON DESIGNATED MONUMENT LOTS CAN VARY DEPENDING ON NUMBER OF GRAVES ASSOCIATED WITH MONUMENT REQUESTED.
- ALL FOUNDATIONS ARE LOCATED WITHIN LOTS.

**LOT SUMMARY**

620	2-GRAVE LOTS
12	3-GRAVE LOTS
7	2-GRAVE PREMIUM FEATURE LOTS
22	2-GRAVE FEATURE LOTS
661	TOTAL LOTS
1334	TOTAL GRAVES



**Key Plan**

No.	DATE	REVISION

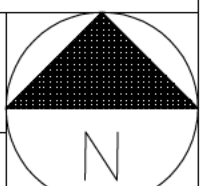
OFFICE OF DEVELOPMENT  
Catholic Cemeteries Association  
10000 Miles Ave., Cleveland, Ohio  
44105  
216.641.7575  
FAX: 216.641.0212

**Holy Cross Cemetery - Brookpark, Ohio**  
**Section 42**  
**PART 3**

SHEET NAME:  
DATE: 5.18.2006  
PROJECT No.:

**A1 SECTION 42 - PART 3**

1"=20'









### SECTION NOTES

- THE LOT NUMBER IS PLACED IN THE UPPER RIGHT HAND CORNER OF THE LOT AS YOU FACE THE LOT AND IS INDICATED AS A SLASH OR TICK MARK.
- THE LOCATION OF GRAVE MARKERS ARE SHOWN BELOW WITH ARROW INDICATING DIRECTION GRAVE MARKERS WILL FACE.
- ALL LOTS ARE 2-GRAVE LOTS UNLESS OTHERWISE NOTED ON THE DRAWING.
- ALL 2-GRAVE LOTS ARE 6'-4" X 10.0'  
ALL 3-GRAVE LOTS ARE 9'-6" X 10.0'

### LEGEND

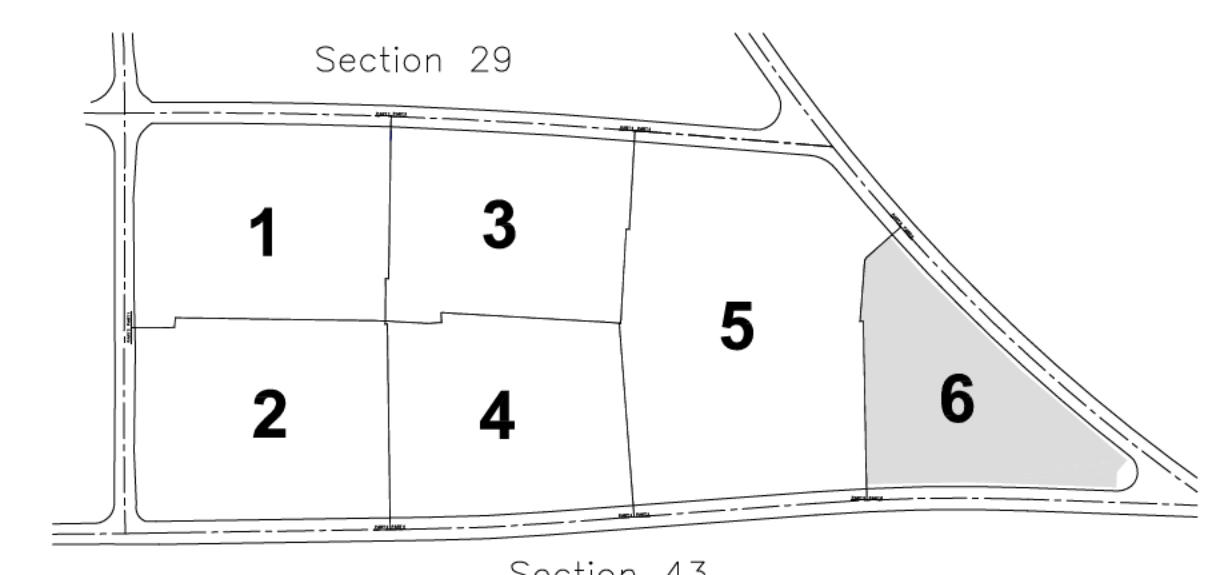
- PREMIUM FEATURE LOT
- FEATURE LOT
- TREE/LANDSCAPE LOCATIONS
- 3 GRAVE LOT
- 288 488 FLUSH MARKERS ONLY
- 205 28"-36" MONUMENTS
- 3305 28"-42" MONUMENTS
- 2733 28"-60" MONUMENTS
- 1904 28"-72" MONUMENTS
- 2856 PILLOW MARKERS

### MONUMENT NOTES

- MONUMENT LOTS ARE RESTRICTED TO THOSE AS SHOWN ON SECTION MAP.
- ALL MONUMENT LOTS ARE EITHER 2-GRAVE OR 3-GRAVE LOTS OTHER CONFIGURATIONS WILL BE DETERMINED AS REQUESTED.
- HEIGHT OF MONUMENTS ON DESIGNATED MONUMENT LOTS CAN VARY DEPENDING ON NUMBER OF GRAVES ASSOCIATED WITH MONUMENT REQUESTED.
- ALL FOUNDATIONS ARE LOCATED WITHIN LOTS.

### LOT SUMMARY

508	2-GRAVE LOTS
14	3-GRAVE LOTS
0	2-GRAVE PREMIUM FEATURE LOTS
0	2-GRAVE FEATURE LOTS
522	TOTAL LOTS
1058	TOTAL GRAVES



**Key Plan**

No.	DATE	REVISION

OFFICE OF DEVELOPMENT  
Catholic Cemeteries Association  
10000 Miles Ave., Cleveland, Ohio  
44105  
216.641.7575  
FAX: 216.641.0212

**Holy Cross Cemetery - Brookpark, Ohio**  
**Section 42**  
**PART 6**

SHEET NAME:  
DATE: 5.18.2006  
PROJECT No.:

**A1 SECTION 42 - PART 6**

1"=20'

